

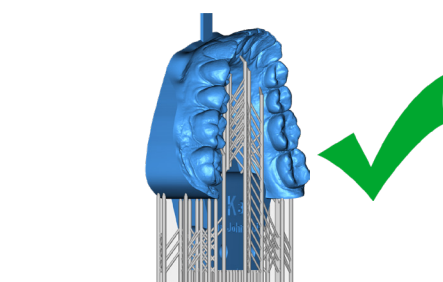
For use with the Kois Digital Transfer Adapter

Print Orientation

Recommended: It is suggested to print Vertically when using the Kois Adapter Attachment to ensure the model does not warp.

Acceptable: Horizontal printing is acceptable but be aware the model can warp when removing from the build plate.

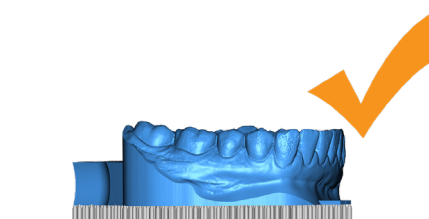
Not Recommended: Printing at an angle is not recommended, as it increases the chance of the model being warped.



Printer Build Plate



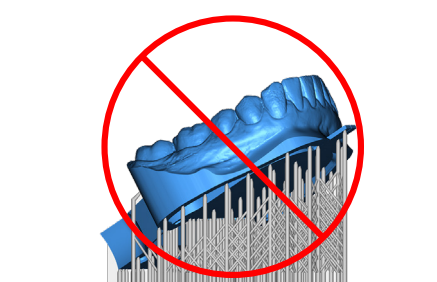
FIGURE 1 — Example of Vertical Print



Printer Build Plate



FIGURE 2 — Example of Horizontal Print



Printer Build Plate

Clearing out the Attachment Pin Holes

- ☐ 1. Place the ball-head side of the hex key on the pin hole.
- ☐ 2. Gently rotate the hex key until the ball head easily enters the opening.
Note: Applying too much force will crack the model.
- ☐ 3. Flip the model over and repeat for the remaining openings.
- ☐ 4. When complete, the Hex tool should cleanly move through both pin holes.



PRODUCTS

3.5mm Hex Tool to Loosen Pin Holes

- 3.5mm Hex Tool with Ball Head.
- Also known as a "Ball Driver Allen Wrench".

